

PARKSIDE NEWS

ISSUE 01
AUTUMN 2022

YOUR QUARTERLY UPDATE ON ALL THINGS PARKSIDE



Indicative image of completed buildings

Welcome to the first edition of *Parkside News*, your quarterly update on progress with the regeneration of the former Parkside Colliery and construction of the new Parkside Link Road.

We're distributing the newsletter to the communities around the site – in Newton-le-Willows, Winwick and Lowton – in addition to making it available on-line at www.thisisparkside.co.uk. Our aim is not just to keep you abreast of progress and forthcoming activities, but also to share with you the many interesting aspects of the Parkside story – from its former role powering British industry to what we're doing to interpret part of the site's role in the English Civil War.

There'll be interviews with local people working on the site and news and updates on the wider community work that the Parkside team is undertaking.

There'll be a focus on the new link road during its construction which is designed to ensure traffic generated by the site's activities avoids local roads and settlements and is whisked quickly and efficiently to the M6 motorway.

You'll spot our story about the new Parkside Community Forum and its role in helping ensure local people's interests and issues are fed back into the Parkside delivery team. And you'll be pleased to see the efforts going in to ensuring that as many local people and businesses get to benefit from the opportunities Parkside is generating.

On the back page you'll find contact details should you wish to share any news, ideas or issues with us – we'll always respond promptly. In the meantime, we hope you enjoy the read.

INSIDE:

Community Forum launched 02

Link road update 04

Sustainable Parkside 05

First local contract awarded 06

Schools programme revealed 08



Alternative language versions of *Parkside News* are available on request by emailing info@thisisparkside.co.uk
An on-line version can be found at www.thisisparkside.co.uk

Parkside News is published by St Helens Borough Council to ensure that neighbours of the site remain fully informed about the project, forthcoming works and its wider timescales. It's part of a raft of activity aimed to keep you informed, whilst showcasing the job creation, use of local suppliers and the project team's work with the local community to ensure that the financial and social benefits of the investment are widely felt. If you have a news story you'd like featuring in the publication, drop us a line at info@thisisparkside.co.uk and we'll assess it for publication.

COMMUNITY FORUM LAUNCHED

Parkside Regeneration, the joint venture between St Helens Borough Council and developer Langtree, has launched its Community Forum to provide local people and businesses with a clear route to engage with the project.

“Community engagement shouldn’t end with planning permission,” said forum member Paul Robinson, the headteacher at St Peter’s Church of England primary school on Birley Street. “There’s much still to be done to deliver Parkside and parents at the school gates want to understand what it means for them and their families.”

Forum membership comprises a mix of local residents, councillors, business people and community figureheads who live and work in the communities around the derelict former colliery site, including Newton-le-Willows, Winwick and Lowton.

“The members have been asked to use their networks to share information with the local community,” explained chair Dougal Paver. “The project will be generating opportunities for local residents and companies and it’s one way that we can get news out to ensure they can access them. I also want the members to act as a sounding board, bringing the community’s suggestions and issues to the table so that they can be considered by the project delivery team,” he added.

The members of Parkside Community Forum are:

- Paul Robinson, headteacher, St Peter’s Church of England primary school, Newton-le-Willows
- Cllr Kate Groucutt, Cabinet Member for Economy, Business & Skills at St Helens Borough Council
- Alexandra Myhill, proprietor, The Riddling Rack, High Street, Newton-le-Willows
- Cllr Cathy Mitchell, ward councillor for Burtonwood & Winwick on Warrington Borough Council. Cllr Mitchell’s ward forms the southern boundary of the Parkside site
- Melvyn Brian, local resident
- Cllr Richard McCauley, Cabinet Member for Regeneration and Planning at St Helens Borough Council
- Cllr Seve Gomez-Aspron, ward councillor for Newton-le-Willows and Deputy Leader, St Helens Borough Council

Commenting on the Forum’s work, Cllr Richard McCauley, cabinet member for Regeneration and Planning, said: “The Forum’s work will help ensure that the public’s needs and priorities are fed into the project team. Parkside is for everyone.”



Paul Robinson, head teacher of St Peter’s primary school and Community Forum member

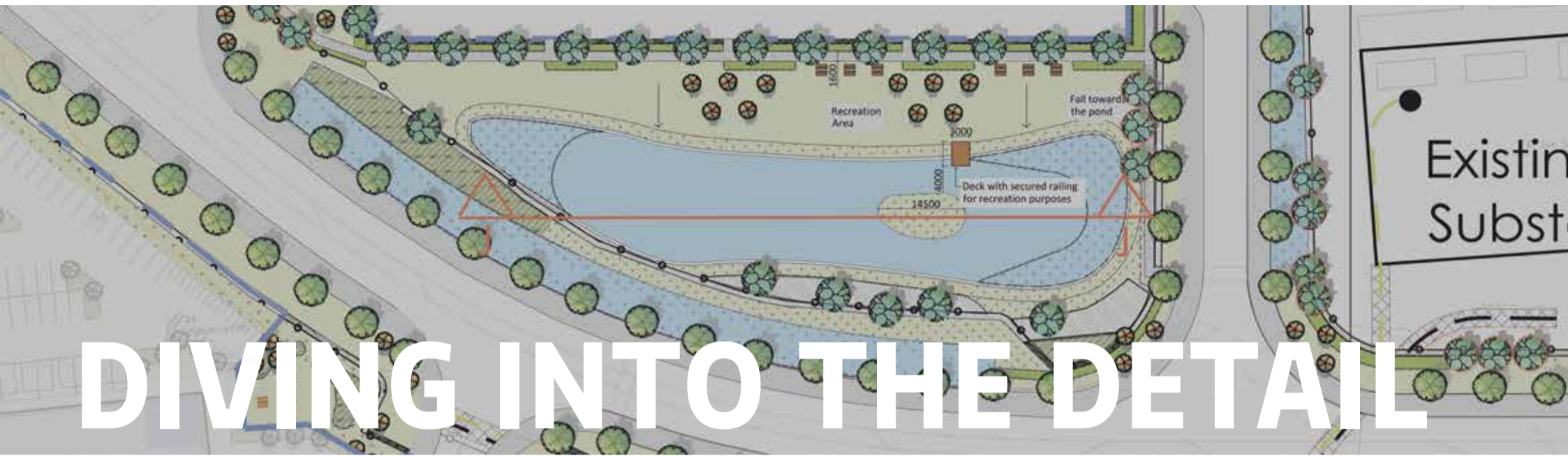
‘parents at the school gates want to understand what Parkside means for them and their families’

IN BRIEF

Contractors have been licenced to use the water hydrant on Castle Hill in Newton-le-Willows to support site investigation works on Parkside. The hydrant will remain in use until the late autumn.

Residents have been notified of a series of road works and roadside electrical work being undertaken by electricity supplier ENWL. The works are essential to ensuring that Parkside has sufficient power to support the new job-creating tenants.

Parkside Link Road is scheduled to complete at the beginning of 2024, providing a direct route into the site from J22 of the M6 motorway, thereby limiting use of local roads by traffic servicing the site and diminishing noise and air pollution.



DIVING INTO THE DETAIL

A dedicated team of advisors are now working on finalising the details of how Parkside will look and function. Issues such as landscape design, heritage trails, tree planting – even down to drainage layouts – are now being discussed with St Helens Borough Council Planning Department.

“The proposals involve retaining as much woodland as possible, whilst adding to this where we can,” explains David Rolinson, an experienced town planner managing the discussions on behalf of developer Parkside Regeneration. “We also want to create a

heritage trail which brings public access through the site to the former Red Bank Battlefield. There’ll be interpretative boards so people can learn more about the site’s role in the English Civil War,” explains David.

Meetings are to be held with officers of The Battlefields Trust – the country’s foremost expert on the UK’s ancient battle sites – to ensure that the story of the Battle of Red Bank is told with historical accuracy. “This is a critical part of our local heritage and we want to celebrate it and share it in a way that enthuses the historians of tomorrow,” said David Rolinson.

Whilst this is underway work has now concluded on an environmental scoping request for the proposed second phase of Parkside. This is needed so that Parkside Regeneration can understand what information the local authority wants from it with regards to environmental investigation prior to preparing any planning permission. The scoping request will be available for public view and commentary via the council’s planning portal at sthelens.gov.uk/planning. Type in ‘Parkside’ as a reference and that should take you to the relevant documents.

OWN A LOCAL BUSINESS? THEN GET IN TOUCH...

Parkside will be investing more than £100m into the local economy – and its impact will be magnified if as many local businesses as possible win the opportunity to supply the project.

St Helens Chamber of Commerce has been appointed to help manage the task of identifying and informing local businesses of tender opportunities.

The first contract has been placed with a local firm after St Helens-based sign manufacturer Vinylene Graphics won the tender to manufacture a range of exterior site signs (see story, overleaf).

“It’s not about doing favours for companies,” explained Parkside Regeneration chairman John Downes. “They have to be competitive, but our programme with the Chamber is

designed to support those who need it so that they are ‘fit to bid’,” he explained. “After that, it’s about helping signpost them to and through the tender process. We made a pledge at the very start of this project that we’d work hard to engage with local suppliers, and we will keep that promise.”

The deal with the Chamber is part of the Parkside programme’s bid to maximise the social and economic gains from the huge investment. Councillor Kate Groucutt, St Helens Borough Council’s Cabinet Member for Economy, Business & Skills, said:

“As a council, we are committed to ensuring that major schemes, like Parkside and the forthcoming town centre regeneration, benefit our borough in as many ways as possible – whether that’s local companies

being awarded contracts or residents given employment and training opportunities.

“This focus on social value helps ensure that money stays in the local economy and supports development of local skills and businesses. We look forward to working with our partners to identify more opportunities in future.”

St Helens Chamber of Commerce is keeping a database of local companies keen to bid for work on the huge regeneration project and interested bidders are asked to contact David Marnell, who is co-ordinating the programme, to register their interest: david.marnell@sthelenschamber.com or complete the local supplier form on the [thisisparkside](http://thisisparkside.co.uk) website here: www.thisisparkside.co.uk/local-suppliers

LINKING IT ALL UP

Residents can't have missed all the construction activity for the new Parkside Link Road (the PLR). The £40m road is being built for St Helens Borough Council by Balfour Beatty and is due for completion in 2024.

In providing a direct route to J22 of the M6 it will ensure goods traffic servicing the new employers will avoid local roads and settlements as well as improving the site's efficiency.

"This is a major investment by the public sector that will benefit local residents, employers and their staff on site," said Lisa Harris, Executive Director of Place for St Helens Borough Council.



An artist's impression of how Parkside may look when completed

DAMPING DOWN

During the dryer summer months PLR contractor Balfour Beatty used a pair of giant water bowser to damp down the soil to minimise dust.

The huge water-filled machines kept wind-blown dust to a minimum whilst the initial earth works were underway to plot out the road's route. Both ran continuously throughout each day during the summer months, re-filling three or four times per day, depending upon conditions and workload. Fortunately, the mild and damp west coast climate meant that reservoirs remained well stocked during that period.

One bowser now remains on site to be deployed as circumstances dictate through the autumn. Mother Nature is likely to take care of things during the wet and cold winter, with the bowser brought back into use as spring emerges.

Meantime, any mud that finds its way from construction vehicles onto public roads is cleaned via a daily street-cleaning regime using the sort of brush-and-water based cleaners commonly used by local authorities.



Water bowser

A SUSTAINABLE PARKSIDE

A raft of experts have been tasked with ensuring that every aspect of Parkside's design and construction is as sustainable as possible. That means using materials that can be recycled, for example, and which use less energy in their manufacturing and installation.

It's highly complex but by getting it right the scheme's developers can be certain that not only is the project's environmental impact diminished, but also that the development will appeal to prestigious, responsible occupiers who want to ensure that their operating bases meet the highest standards.

Global consultancy Arup is leading the review. Its five-phase programme will ensure that all aspects of the scheme's design align with industry-leading standards and fulfil the project team's ambitions, with its review including, but not limited to:

Benchmarking • Energy Usage and Generation • Health and Wellbeing • Transport • Ecology • Zero Carbon • Materials • Innovation

"The sustainability agenda is now a mainstream consideration, with major end-users and funders only interested in supporting projects that deliver best practice," explained Lisa Harris, St Helens Borough Council Executive Director for Place.



Above
Andy Sheppard, Arup, Parkside



Commenting on their appointment, Andy Sheppard, sustainable buildings associate at Arup, said: "Working with St Helens Borough Council and Langtree is a tremendous opportunity to help them turn their passion for sustainability into practical solutions for this important development. We'll be using our expertise to help Parkside keep pace with increasing demand for sustainable design and operation from tenant organisations, employees and communities."

COMING SOON

It's full steam ahead behind the scenes at Parkside, with teams of architects, engineers, landscape designers and much more besides pulling the various strands together to make the project happen.

And with the first preparatory site investigations and electricity diversions now underway before we bring buildings out of the ground, here are some key other milestones coming up fast:



Environmental scoping request submitted to St Helens Borough Council for proposed Phase Two: **end-October**



Planning approval for scheme boards: **November**



'Meet the buyer' events for local suppliers seeking sub-contracting opportunities: **November**



Release of invitations to tender for the main construction work: **Q1, 2023**



Launch of marketing campaign targeting occupiers: **Q1, 2023**

ST HELENS SIGNAGE MANUFACTURER VINYLINE WINS FIRST KEY PARKSIDE CONTRACT



Keith Hughes of Vinylne (left) talks Simon Foden from Langtree through the manufacturing process for the site's new exterior signage

St Helens-based sign manufacturer Vinylne Graphics has been awarded a contract to manufacture a range of exterior site signage following a competitive tender process. The installations will appear around the boundary of the site, subject to planning permission.

The deal marks the first 'win' for Parkside Regeneration's long-standing pledge to involve as many local suppliers as possible in the delivery of the project.

Keith Hughes, managing director of Vinylne Graphics, says he's delighted with the appointment.

"We have always had a keen interest in seeing this site transformed for the good of the town and the wider region," he said.

Other opportunities for local companies to tender for work will be announced over the coming months, with a programme managed on behalf of Parkside Regeneration by St Helens Chamber of Commerce.

"Parkside's impact will be felt many times over if more local firms work with St Helens Chamber and we're delighted to be leading the way," added Keith Hughes of Vinylne.

The main construction tender is expected to be published in the autumn and bidders will be judged, in part, on proof of their ability to engage local labour and local sub-contractors.

READY, SET, GO FOR LITTLE GREEN FINGERS

Plans are being drawn up to involve children from local schools with the planting of the various gardens, flower beds, water features, hedges and trees that will make up the multi-million pound investment in Parkside's landscaping.

"We want each school to have its own area to work on as part of the national curriculum," said project architect Ben Battye. "It'll take a bit of organising, but it'll mean that children and parents can enjoy the landscape knowing they played their part in helping craft it."



BIG NUMBERS ALL ADD UP

Parkside will deliver substantial benefits in terms of investment, jobs, rateable income for the council, apprenticeships and much, much more. Here's a summary of the headline facts and figures.

CONSTRUCTION IMPACTS

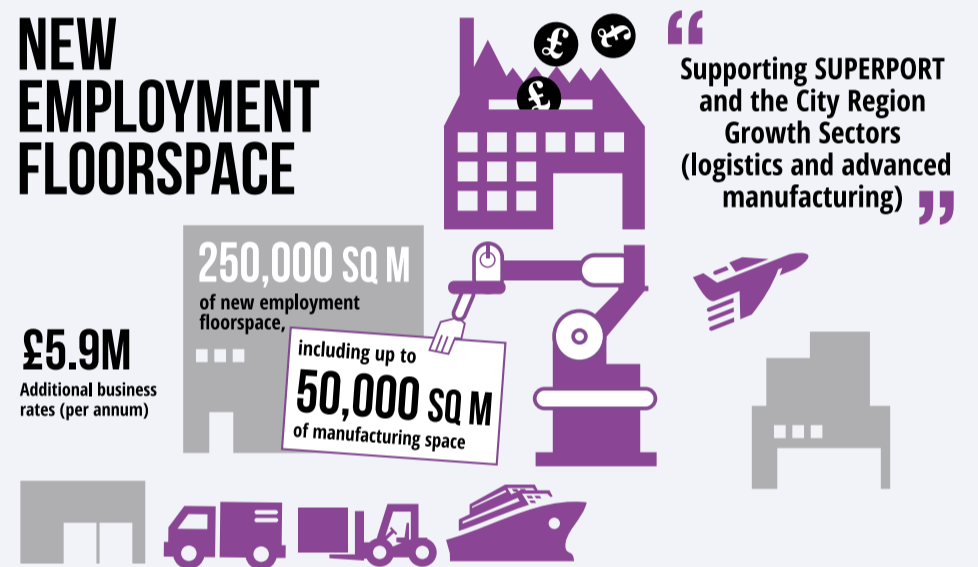


This is Parkside

Regeneration Phase 1 & 2



NEW EMPLOYMENT FLOORSPACE



ECONOMIC IMPACTS

“ Providing new employment opportunities in key growth sectors ”

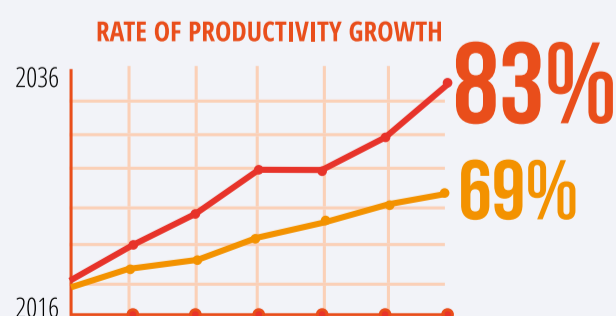
“ Helping to achieve higher productivity in the City Region ”

Net additional GVA (per annum)

£290M
GVA



DRIVERS OF ECONOMIC GROWTH



Growth in productivity in logistics sector also projected to exceed national average over next 20 years



£80,300

MANUFACTURING GVA PER JOB



£42,900

LIVERPOOL CITY REGION
ECONOMY AVERAGE GVA PER JOB

*GVA per job (productivity) of manufacturing sector almost double economy average

WHAT DO YOU WANT TO BE WHEN YOU GROW UP?

That's a question we all enjoyed pondering as youngsters – and one that will be posed to children in the schools of Newton-le-Willows and at Winwick C of E Primary this academic year as a careers roadshow funded by Parkside Regeneration pays a visit.

The detailed taught programme, delivered by the St Helens Chamber of Commerce, is being offered to all schools in the area and will help children better understand the modern world of work and the careers choices open to them – as well as how working hard at school and doing their homework can help them succeed!

And a key strand of the programme will involve looking at the wide range of jobs that will be on offer at Parkside as the first

units come on stream. The logistics and manufacturing sectors are being targeted to occupy those units and they both bring with them a wide range of skilled and semi-skilled work – everything from process engineers to software and robotics specialists, forklift drivers to personnel managers, plant managers to fitters – and many, many more roles besides.

Helping the students in the final part of the programme – known as the Careers Carousel – will be a host of experts from the various technical teams delivering Parkside. They will bring the whole programme to life by recounting their own career journeys and letting youngsters pick their brains about what life's really like out there in the world of work.

CLOCKING UP THE MILES

We all take roads for granted – they've been in Lancashire since Roman times, after all.

But how much do you know about what goes into them? And how much material and drainage is required to ensure they function properly?

So far, the Parkside Link Road has seen:

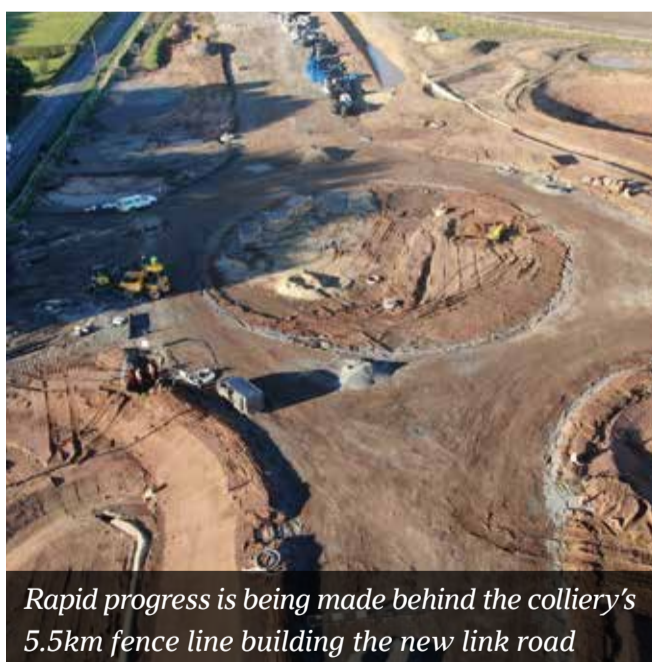
- 56,000 m³ of earth and colliery spoil cut out from the ground and
- 54,000 m³ filled in.
- 4,500 metres of drainage pipes installed

Moving earthworks around helps level out contours in the landscape to provide an easy driving experience as well as improve the engineering options open to the road's designers. Drainage is critical to ensuring run-off water is captured for treatment rather than simply entering local water-courses.

Once the line of the road has been established different layers of aggregates are needed, one on top of the other. Think of them as the road's foundations. At the time of writing 14,800 tonnes of base layer has been laid, with more to come. Five thousand six

hundred tonnes of tarmac will be laid as the top surface, providing the high quality surface the development's visitors will need as they access the site from junction 22 of the M6.

Surrounding the site currently is a long heras fence, a special type of secure fencing popular on building sites and around music festivals. Almost four miles of heras envelops the PLR site, keeping the public and equipment safe.



Rapid progress is being made behind the colliery's 5.5km fence line building the new link road

ETHAN'S DIGGING A FUTURE FOR HIMSELF



Ethan Edwards, Balfour Beatty

Local lad Ethan Edwards (18) has set his sights on a career in civil engineering – and he's landed a job on Balfour Beatty's team building the new Parkside Link Road.

For now Ethan's learning on the job, but he's shortly to formalise his training with a day release honours degree in civil engineering at Liverpool's John Moores University.

"It's great to be able to work in the borough on such a critical project," says Ethan. "I've been undertaking surveys using GPS devices and will shortly become involved in vital trench-work," he explains.

The end-game is to gain his degree then qualify as a chartered engineer, but what does he do to relax?

"I love drawing – mostly portraits," he says. "And there's my season ticket at Goodison Park. Never miss a game," he notes, proudly.

A JOINT VENTURE BETWEEN

Langtree



ST HELENS
BOROUGH COUNCIL

Alternative language versions of Parkside News are available on request by emailing info@thisisparkside.co.uk
An on-line version can be found at www.thisisparkside.co.uk

Parkside Regeneration is a joint venture between St Helens Borough Council and developer Langtree committed to bringing about the regeneration of the derelict Parkside Colliery and creating new investment, jobs, apprenticeship and training opportunities for local people. For more information visit www.thisisparkside.co.uk